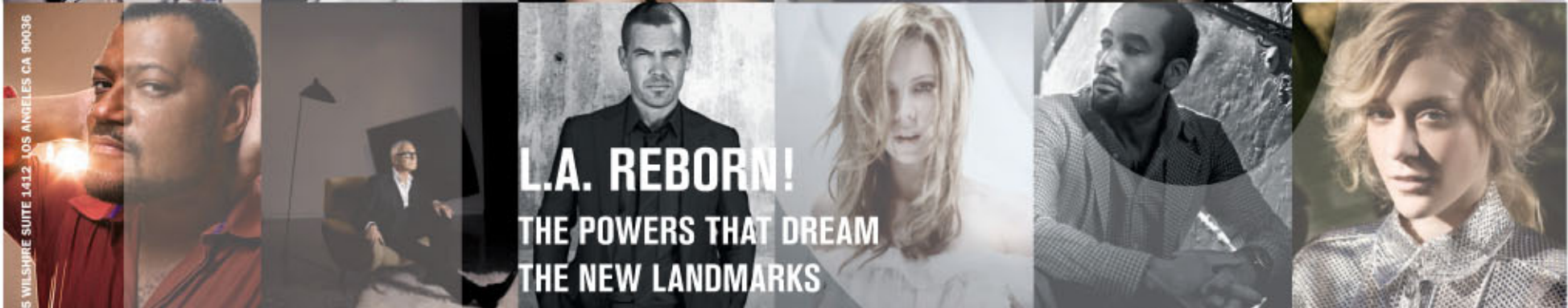


Angeleno

CELEBRATES 10 YEARS!

THE DECADE & THE DRAMA



L.A. REBORN!
THE POWERS THAT DREAM
THE NEW LANDMARKS
10 PARTIES TO REMEMBER
ALL-TIME "IT" GIRLS
LOCAL STYLE, GLOBAL REACH
THE DISHES THAT WOVED YOU

ANGELENO 5455 WILSHIRE SUITE 1412 LOS ANGELES CA 90036

MODERN LUXURY™



NOVEMBER 2008 \$5.95

Cold Play

Planning your winter ski getaway? We've got the icy hot scoop on the best new runs, restaurants and resorts. The mountains are just a plane ride away...



POWDER TRIP

The new Lumière Hotel in Telluride.

Telluride, Colorado

Rich in rowdy mining history that today manifests itself in a laid-back cosmopolitan vibe, Telluride has overcome a recent shortage of luxury hotel rooms with two spectacular openings in the past year. **Lumière Hotel** is a 30-unit, whole ownership boutique property managed as a hotel for both guests and owners. Spacious suites overlook the majestic San Juan Mountains. The common area includes **Little Bar**, a sexy lounge with a nightly sushi bar and alfresco hot tubs; larger suites feature multi-jet shower stalls and chefs' kitchens. The hotel is located in Mountain Village, accessible by a free gondola from town (rates from \$439; 118 Lost Creek

Ln., 866.530.9466 or lumierehotels.com). Also in Mountain Village, and open since February, the full-service **Capella Telluride** has 100 guest rooms featuring personal assistants as part of the hotel's signature concierge service. Take in dinner at the mod **Onyx Restaurant**, where chef Kenny Gilbert turns out locally sourced mountain faves, or duck into **Suede Bar** for aperitifs and tapas (rates starting at \$295, 568 Mountain Village Blvd., 877.247.6688 or capellatelluride.com). **PEAK PERFORMANCE!** The mountain boasts 115 trails, 2,000 skiable acres and the famous "Galloping Goose," a run that's 4.6 miles long. Opens November 26. tellurideskiresort.com. —Connie Dufner

Park City, Utah

"Mountain rustic" (read: timbered ceilings, taxidermy, rose-embroidered throw pillows) can only go so far, even in a ski town. Trust shiny hospitality brand Waldorf=Astoria to remedy Park City's same-old with the new **Dakota Mountain Lodge** (rates from \$199; 2100 Frostwood Dr., 435.647.5500), welcoming guests since August. The lobby boasts crystal chandeliers, black mahogany framework, chocolate leather chairs from Mitchell Gold + Bob Williams and even a carved deer shipped in from an antique dealer in New York. Throw in 42-inch HD TVs in all the rooms, and granite countertops and Viking kitchen appliances in the suites, and Dakota is homey in the way that you'd actually want your home to look. The property's 175 luxury guestrooms range from one-bed king or queens to the posh six-bedroom Presidential Suite, with choice rooms boasting fireplace-adorned balconies that overlook an inner courtyard with heated pool. Or, starting at \$400,000, snap up one of 104 condos, complete with raised-hearth fireplaces, private patios and bragging rights to ownership in Waldorf=Astoria's first ski hotel.

After hitting the Canyons, Park City or Deer Valley ski areas, head to lobbyside restaurant **Spruce**, the first outpost of the acclaimed San Fran restaurant, where local ingredients rule and the carrot-Marcona almond soup is a must. On par is downtown Park City restaurant **350 Main** (350 Main St., 435.649.3140), a mecca of globally inspired, healthy cuisine; or true adventurers can head up to the Canyons' 8,300-foot-elevation **Lookout Cabin** (lunch only; on Lookout Peak at the top of the Golden Eagle and Short Cut lifts; 435.615.2892), acclaimed for its wine list and only accessible to skiers. Back at the hotel, slide into Dakota's **Golden Door Spa**, one of just six in the world, for spa director Sharon Ogawa's foot treatments, designed to pamper your tootsies after a day in ski boots. **PEAK PERFORMANCE!** Board Dakota's Frostwood Gondola to reach the Canyons, Utah's largest ski and snowboard resort. Nearly half of the 3,700 skiable acres are Black Diamond level. dmlparkcity.com. —Marissa Conrad



The lobby at Dakota Mountain Lodge, Waldorf=Astoria's first ski property.

CONTINUED...



Lake Tahoe's new Ritz-Carlton Highlands.

North Lake Tahoe, California

On December 9, visitors to the Northstar-at-Tahoe ski area will have a new luxury spot in which to hang up their skis: The \$300 million **Ritz-Carlton Highlands** (rates from \$299; 13005 Ritz-Carlton Highlands Dr., 530.562.3000), the first luxury resort to open in Tahoe in decades, offers ski-in/ski-out mid-mountain access, as well as an inner-mountain gondola that connects to the nearby Village-at-Northstar. Just 15 minutes from Lake Tahoe, the year-round resort offers 170 guest rooms plus 23 private Ritz-Carlton Residences and 25 Ritz-Carlton Destination Club Residences. **PEAK PERFORMANCE!** The ski area boasts 89 trails with 2,904 acres of terrain, including 344 acres of expert backcountry skiing when conditions permit. ritzcarlton.com/laketahoe. —*Korey Karnes Huyler*

Steamboat, Colorado

It's called the Yampa Valley Curse: Once people visit Steamboat, they often stay for life. It's not everywhere, after all, where you can start your morning with a hike to a skyscraper-sized waterfall, recharge in hot springs and, come dusk, sit down to a world-class dinner at a French fusion bistro.

Perhaps all the town was lacking was a five-star luxury residence. Well, when it rains, it pours: Known for its collection of destinations nonpareil, Timbers Resorts is putting the finishing touches on **One Steamboat Place**, an 80-residence ski-in/ski-out resort opening in January. With fractional ownership starting at \$370,000 and whole ownership at \$3 million, the three- and four-bedroom residences are spectacular: Re-purposed wood and hand-cut stone lend them a sturdy timelessness, while amenities like steam showers and heated floors are decidedly non-rustic. Owners enjoy a market, new restaurant, spa and access to a golf course. They'll also be able to swap residences with other Timbers



The aesthetic is rustic yet refined at new One Steamboat Place.

owners through a reciprocity program—so hello Tuscany and Napa. **PEAK PERFORMANCE!** Steamboat offers 165 trails over 2,965 acres. With a moisture content of just 4.2 percent, the powder is superb. 866.599.4626, info@onesteamboatplace.com. —*Matt Lee*

Aspen/Snowmass, Colorado

Think Norman Rockwell meets *The Great Gatsby*—Aspen is both an idyllic small town plucked out of a postcard, and a chic city with enough man-made wealth to make you forget why you came to this gorgeous spot in the first place—almost. New to the scene is **Viceroy Snowmass**, the first mountain resort for the exclusive hotel chain. With 173 guest rooms and residences, the hotel forms the focal point of Snowmass' new base village, and is just a 10-minute drive from downtown Aspen. Interiors are by international hotel design superstar Jean-Michel Gathy (we loved the lobby lounge's old-new mix, with an 87-foot glass bar stretching across both spaces), with a Kelly Wearstler-designed pool terrace, cafe and bar in whites, pale blues and greens (opens Nov. 25; rates from \$270, 866.326.9765 or viceroyssnowmass.com). In Aspen, **The Little Nell** celebrates its 20-year anniversary with a room renovation by famed residential designer Holly Hunt (reopens Dec. 1; rates from \$395, 675 E. Durant Ave., 888.843.6355 or thelittlenell.com). Craving Italian? A new Italian spot, **Gisella**, opened in June. Handsome interiors highlight sunny, sensuous flavors (415 E. Main St., 970.925.8222, or gisellaaspen.com). **PEAK PERFORMANCE!** The ski area includes four mountains: Aspen Mountain and Snowmass (opens Nov. 26); and Aspen Highlands and Buttermilk (opens Dec. 12). There are 147 miles of trails, with the longest run at 5.3 miles. aspensnowmass.com. —*C.D.* ■



EAT SLEEK

Entryway of Gisella, Aspen.