

# SNOW

FAST  
FORWARD  
FASHION  
.....  
WHISTLER'S  
OTHER  
GAMES

LIFE | LIFTS | LUXURY



## TICKET TO RIDE

ALL ABOARD THE GLACIER EXPRESS



HELI GOES  
GREEN

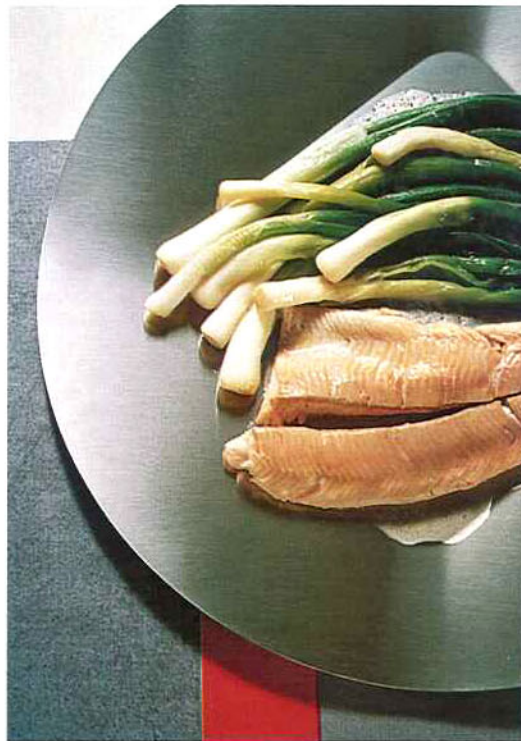
THE GREAT  
SNOWBASIN  
MYSTERY

THE TAHOE  
YOU DON'T  
KNOW

WINTER 2009 \$6.99



have it your way Capella Telluride® may be the newest super-luxe resort in town, but it's already making a bid to be the most accommodating, with a team of personal assistants ready to use their insider status to make your stay truly memorable. Simply confide your heart's desire during your pre-arrival consultation — a snowcat-drawn sleigh ride capped with a campfire dinner; a winter fly-fishing expedition followed by a sumptuous meal of your catch prepared by executive chef Kenny Gilbert — and they'll make it happen. It's sort of like having a best friend in town, only they won't tag along and you'll never have to repay the favor. So really, it's better.



**GONDOLA GA-GA**

Back in 1936, Sun Valley, Idaho, became the continent's first ski resort, shuttling skiers up its slopes on a lift modified from a mechanism used to load bananas onto cargo ships. Now it's embracing newfangled "gondola" technology, and doing it with gusto. Not only will this season usher in a Bald Mountain gondola to the Roundhouse Restaurant, but a proposal calls for connecting the bifurcated resort with a cable route linking Bald Mountain to Dollar Mountain, a solid mile away. Passengers would fly over downtown Ketchum, presumably making every hotel in town a slope-side resort.

CLOCKWISE FROM TOP RIGHT: COURTESY SUN VALLEY/KETCHUM CVB; EISING/JUPITER IMAGES; COURTESY ONE STEAMBOAT PLACE; COURTESY CAPELLA TELLURIDE; GARY BREITHACHER/STONE/GETTY



**Full Steam Ahead**

The next great resort is ... an old great resort. Steamboat Springs,® Colorado — all Wild West and family friendly — is undergoing an estimated \$1 billion overhaul that will give the base area, long a hodgepodge of mediocre design and poor pedestrian planning, a new pulse gondola and improved shuttle service, more public plazas, and some premium lodgings. The first jewel in this new setting, the luxurious One Steamboat Place, is an amenity-rich, ski-in-ski-out residence building. If you've yet to buy, we'd suggest getting on that horse.

